

MD Series

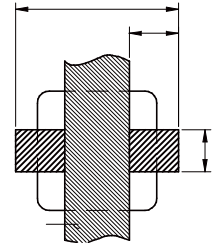
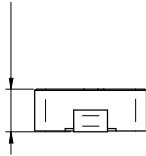
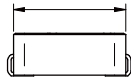
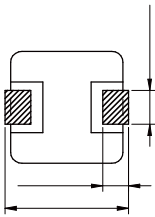


CHARACTERISTICS

- Molded type
- High saturation current due to CIP material
- Nature air gap and no acoustic noise
- Different sizes available
- Quantity: 4000pcs

APPLICATION

- High current DC/DC converter
- LC filter



Part No	Inductance (μH)	Tolerance	Temperature Rise Current Typ. (A)	Saturation current Typ. (A)	DCR Typ. (mΩ)	DCR Max. (mΩ)
MD5012-8R2M	8.20	±20%	1.7	2.8	327	378
MD5012-100M	10.0	±20%	1.5	1.8	335	385
MD5012-150M	15.0	±20%	1.3	1.6	410	470

Operating temperature : -40C ~ +125C

Temperature rise current : The actual value of DC current when the temperature rise is T40C

Saturation Current that will cause initial inductance to drop 20% approximately .

