

**MDTA Series**  
 Flat Wire Molded Inductor  
 Size 1580

**FEATURES**

- 
- 
- 
- 
- 
- 
- 

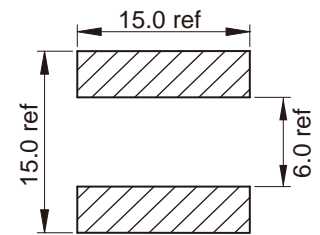
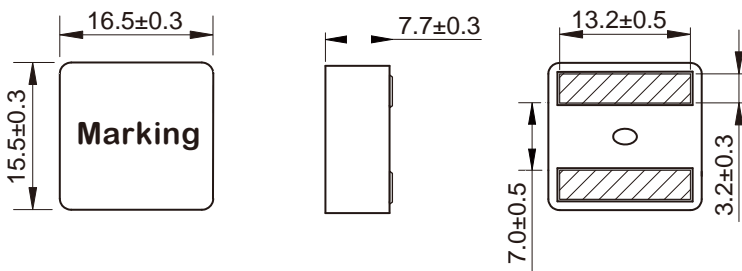
C

**APPLICATION**

- 
- 

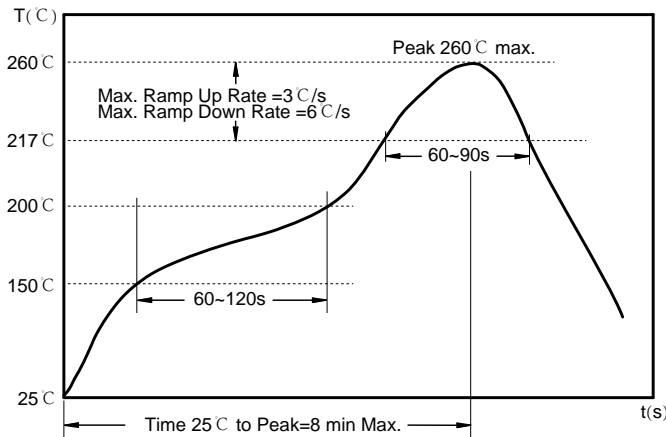
Dimensions: [mm]

Land Pattern: [mm]



Electrical Properties:

## Soldering Reflow:



Preheat condition: 150 ~200°C / 60~120 sec.

Allowed time above 217°C : 60~90 sec.

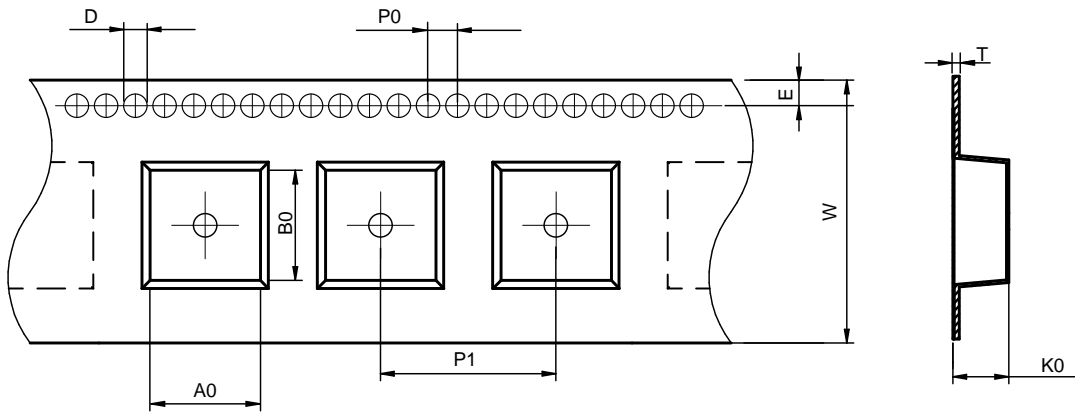
Max temperature: 260°C .

Max time at max temperature: 10 sec.

Allowed Reflow time: 2x max.

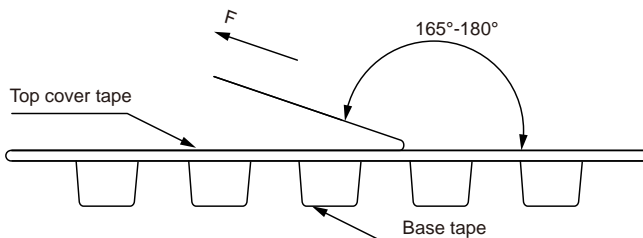
## Packaging Information:

### Tape Dimension :



| Series   | A0 (mm)  | B0 (mm)  | D (mm)  | P0 (mm) | P1 (mm)  | W (mm)   | K0 (mm) | E (mm)   | T (mm)    |
|----------|----------|----------|---------|---------|----------|----------|---------|----------|-----------|
| MDTA1580 | 17.0±0.1 | 16.0±0.1 | 1.5±0.1 | 4.0±0.1 | 24.0±0.1 | 32.0±0.3 | 8.5±0.1 | 1.75±0.1 | 0.50±0.05 |

### Peel force of top cover tape:



The peel force of top cover tape shall be between 0.1 to 1.3 N

### Product Marking:

|         |                       |
|---------|-----------------------|
| Marking | Printing (Inductance) |
|---------|-----------------------|

Reel Dimension: [mm]



Packaging Quantity: