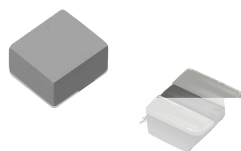


MDTE Series

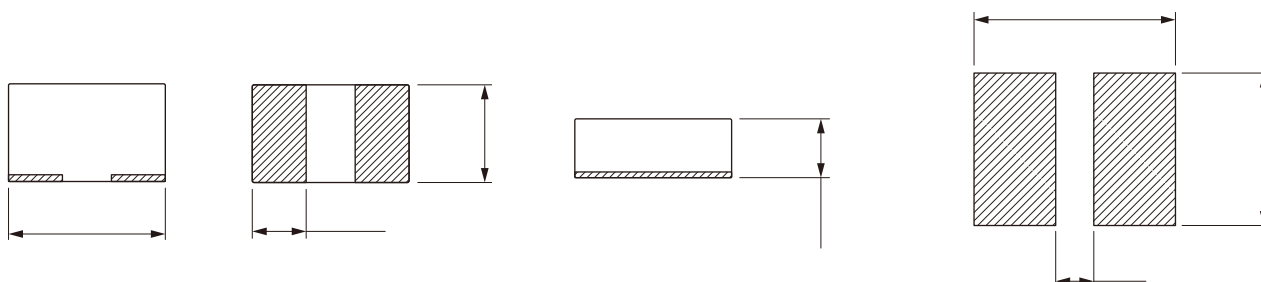
FEATURES

- Soft saturation
- High current, low DCR, high efficiency
- Very low acoustic noise and very low leakage flux noise
- High reliability
- 100% Lead(Pb)-Free and RoHS compliant
- Operating temperature -40~+125 °C (Including self - temperature rise)
- Quantity: 3000pcs



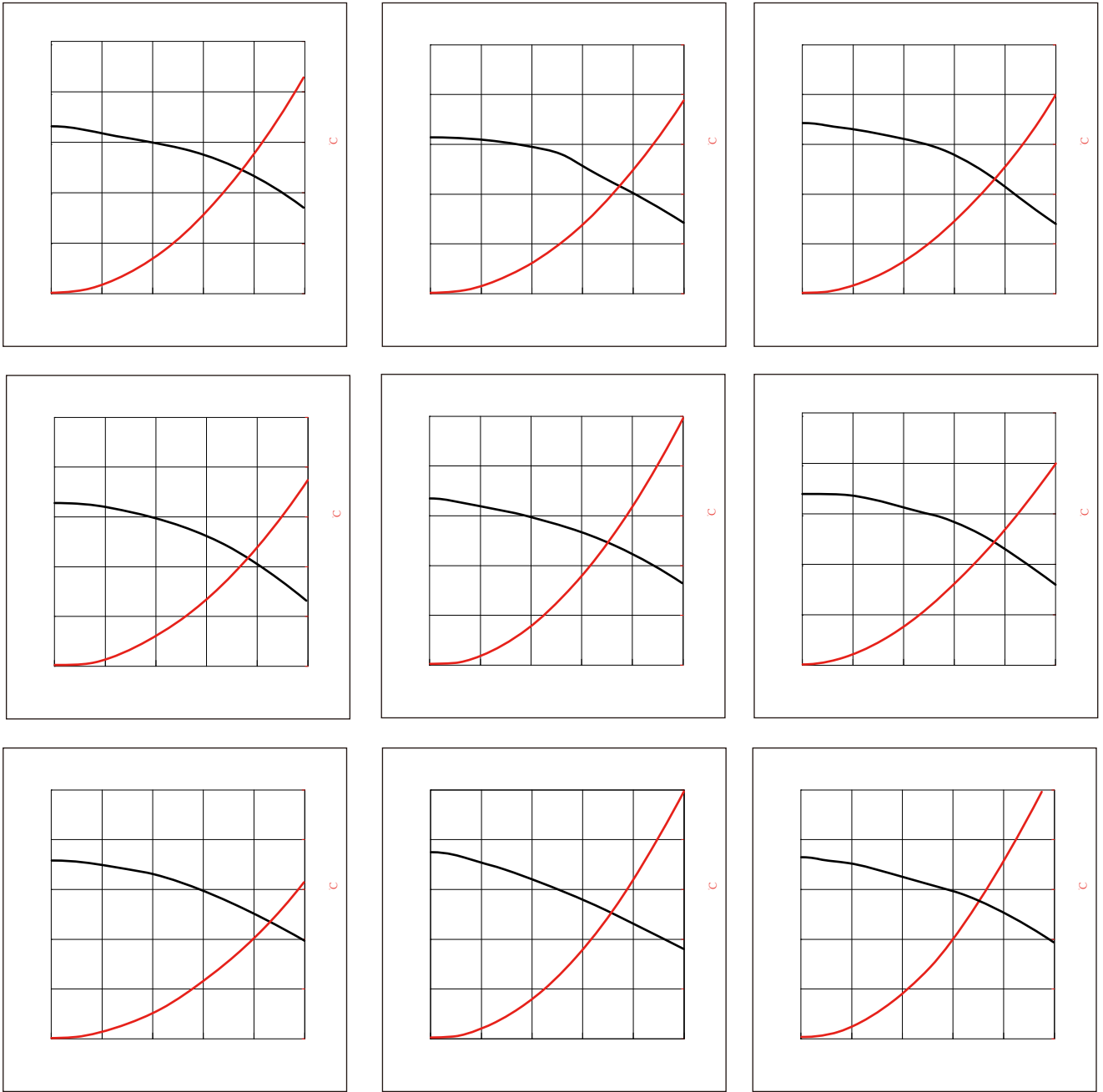
APPLICATION

- Note PC power system, incl. IMVP-6
- DC/DC converter

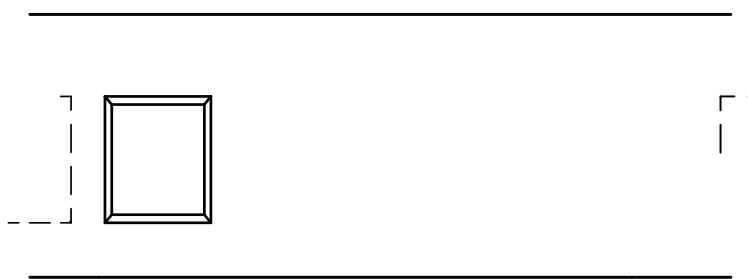


	(μH)		Saturation (A)	Saturation (A)	(A)	(A)	(m Ω)
MDTE20121A-R10M	0.10	$\pm 20\%$	8.5	8.0	7.5	7.0	13
MDTE20121A-R22M	0.22	$\pm 20\%$	7.3	6.8	7.1	6.5	22
MDTE20121A-R24M	0.24	$\pm 20\%$	7.2	6.7	7.0	6.4	23
MDTE20121A-R33M	0.33	$\pm 20\%$	6.5	6.0	5.5	5.0	32
MDTE20121A-R47M	0.47	$\pm 20\%$	5.5	5.0	4.7	4.3	36
MDTE20121A-R68M	0.68	$\pm 20\%$	5.0	4.5	4.3	4.0	43
MDTE20121A-1R0M	1.00	$\pm 20\%$	4.0	3.5	3.9	3.5	63
MDTE20121A-1R5M	1.50	$\pm 20\%$	3.2	2.7	3.1	2.6	85
MDTE20121A-2R2M	2.20	$\pm 20\%$	2.7	2.4	2.0	1.7	150

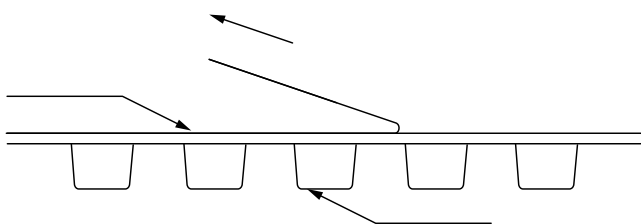




:

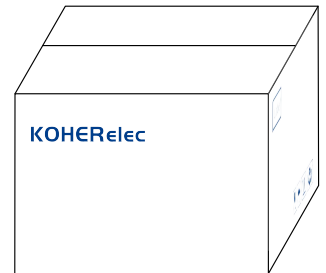
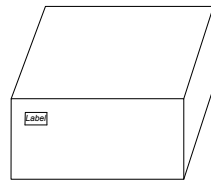
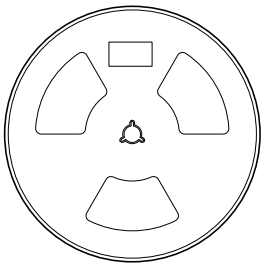
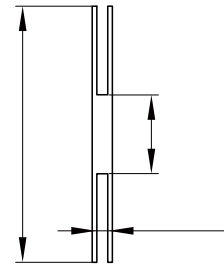
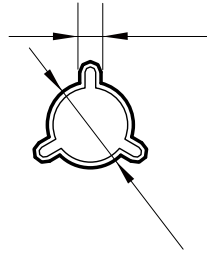
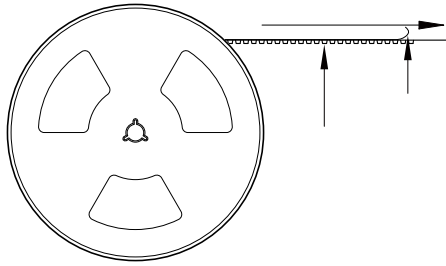


MDTE20121A	1.5± 0.1	2.3± 0.1	1.5± 0.1	4.0± 0.1	4.0± 0.1	8.0±



The peel force of top cover tape shall be between 0.1 to 0.98 N

:



3000 Pcs/Reel

5 Reel /Inner box(15K Pcs)

8 Inner box/Carton box(120K Pcs)

:

-
-
-
-
-
-
-
-
-
-