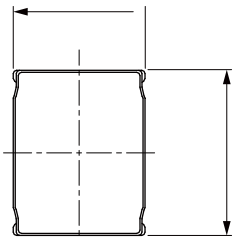


## NRSM Series

Wire Wound SMD Power Inductor  
Size 252010

Dimensions: [mm]

Land Pattern: [mm]



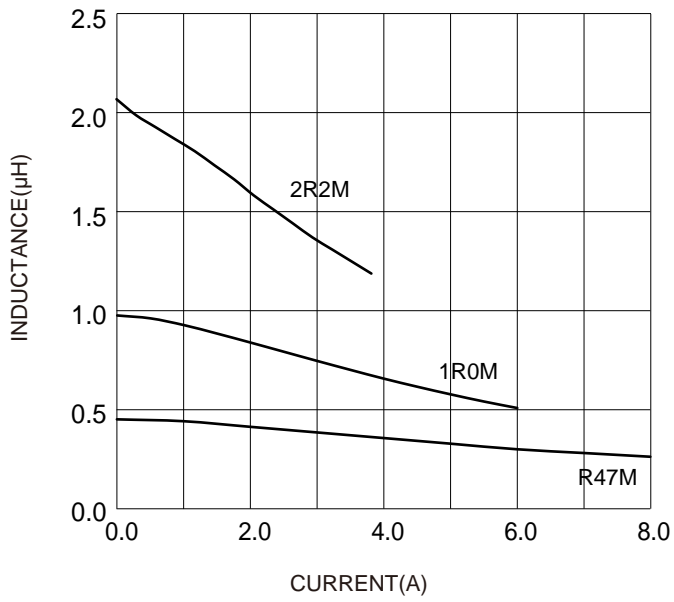
Electrical Properties:

Saturation Current that will cause initial inductance to drop approximately 30%

Temperature Rise Current: For max value,  $T < 40^{\circ}\text{C}$ ; For Typ value,  $T$  is approximate  $40^{\circ}\text{C}$ .  $2.0 \pm 0.2$

## Typical Electrical Characteristics:

Inductance VS. Current Characteristics:



Temperature Rise VS. Current Characteristics:

